

Neon

Developed for you,
now and in the future.



Securities Services.
Moving forward together.

Your portfolio available on any device

Innovation and transformation go hand in hand. We are therefore pleased to present you Neon, our fast and easy-to-use online tool to access your portfolio, at any time of the day and from any device (PC, tablet, mobile).

Monitor your costs

KBC Securities Services is strongly committed to cost transparency as costs affect your return. That is why we don't only inform you about which costs and taxes apply to your transactions. You also receive an estimate of the impact of the costs and taxes on your return, as both an absolute amount and a percentage.

Discover Neon

Curious what Neon looks like? Take a sneak preview on the following pages in this brochure.

- **Mobile use**
Mobile access for you and your asset manager, on any device, at any time.



- **Uniform offer**
Uniform offer to the asset manager as well as the end customers. Fully integrated with the data of KBC Securities Services.

- **Reliable**
Based on in-depth market research, KBC Securities Services has opted for Objectway, a reliable partner with years of experience in Wealth technology.



- **Secure**
Securely hosted in datacentres that meet the ISO 27001 (Security) and 9001 (Quality) certifications. Annual penetration tests to ensure security.



What does Neon look like?

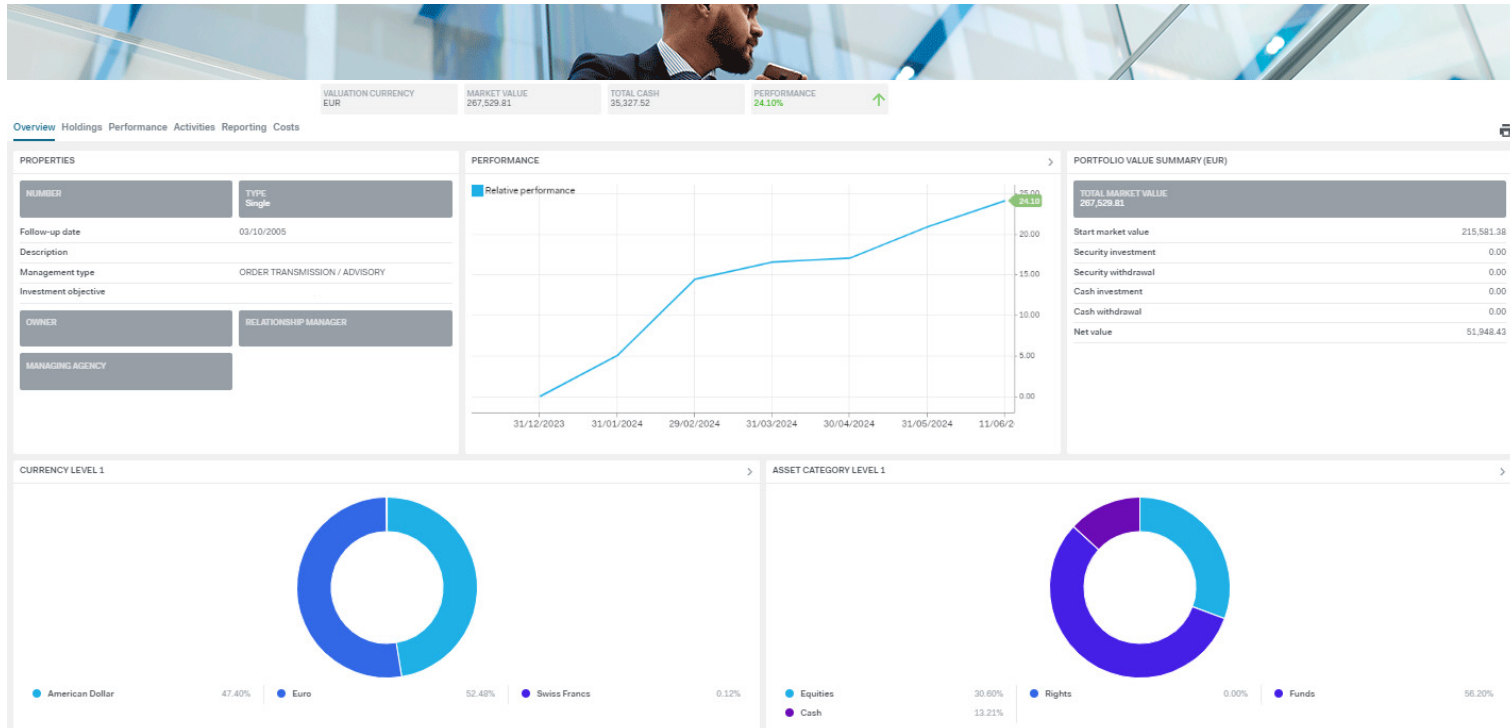
This highly intuitive application gives you online access to:

- Portfolio overview
- Overview of positions and transactions
- Allocation
- Return
- Client reports
- Cost disclosure



Portfolio overview

Gives you an overall view on a single screen, showing the valuation, return and allocation of your portfolio, both in figures and visually.





Overview of positions and transactions

Shows you all positions and transactions within your portfolio, with detailed information on the individual positions, amounts, market value, gains and losses.



VALUATION CURRENCY		MARKET VALUE		TOTAL CASH		PERFORMANCE							
EUR		267,529.81		35,327.52		24.10%		↑					
Overview Holdings Performance Activities Reporting Costs													
Profiles ASSET CLASS ▼													
<div>VALUATION DATE 11/06/2024</div>													
		Product	Amount	Price	Average Purchase Pr...	Historical performance	YTD Performance	Value (EUR)	Accrued (EUR)	Market value (EUR)	Book cost (EUR) ▲	PT %	Unrealized (EUR)
▼ Equities 3 Items													
<div>1</div>	<div>2</div>	NYRSTAR NV (BR)	75.00	0.06 EUR	0.00 EUR	0.00%	-41.54%	4.56	0.00	4.56	0.00	0.00%	4.56
<div>1</div>	<div>2</div>	ALPHABET --- SHS -A- (NY)	855.00	176.62 USD	0.00 USD	0.00%	29.22%	139,824.17	0.00	139,824.17	0.00	52.26%	139,824.17
<div>1</div>	<div>2</div>	INDUSTRIA DE DISEÑO TEXTIL (MX)	-1,275.00	45.47 EUR	24.95 EUR	-45.13%	-13.28%	-57,974.25	0.00	-57,974.25	31,812.20	-21.67%	-26,161.05
Total						157.30%	41.28%	81,854.48	0.00	81,854.48	31,812.20	30.60%	113,667.68
▼ Rights 1 Item													
<div>1</div>	<div>2</div>	ORPEA RIGHT EX190124 (PA)	750.00	0.00 EUR	0.00 EUR	0.00%	0.00%	0.08	0.00	0.08	0.00	0.00%	0.08
Total						0.00%	0.00%	0.08	0.00	0.08	0.00	0.00%	0.08
▼ Funds 4 Items													
<div>1</div>	<div>2</div>	MC GL INV.FD SIC GLOB.GR.EQ.-R(CAC)	1,945.00	169.33 EUR	103.13 EUR	64.19%	14.40%	329,346.85	0.00	329,346.85	-200,593.74	123.11%	128,753.11
<div>1</div>	<div>2</div>	FRANK TP ASIA GR A YDIS (VEST)	-440.00	32.91 USD	31.39 USD	-13.08%	-11.02%	-13,407.78	0.00	-13,407.78	11,653.87	-5.01%	-1,753.91
<div>1</div>	<div>2</div>	C + F BEVEK VEGA EQUITY C KAP	-300.00	207.51 EUR	190.68 EUR	-8.11%	-2.47%	-62,253.00	0.00	-62,253.00	57,203.74	-23.27%	-5,049.26
<div>1</div>	<div>2</div>	AGRESSOR FCP (VEST)	-53.00	1,949.78 EUR	1,848.46 EUR	-5.20%	-10.08%	-103,338.34	0.00	-103,338.34	97,968.36	-38.63%	-5,369.98
Total						345.24%	22.92%	150,347.73	0.00	150,347.73	-33,767.77	56.20%	116,579.96
▼ Cash 3 Items													
<div>1</div>		Current account	34,600.52 EUR		0.00%	0.00%	34,600.52	0.00	34,600.52	-34,600.52		12.93%	0.00
<div>1</div>		Current account	437.31 USD		0.00%	2.20%	404.92	0.00	404.92	-375.14		0.15%	29.78
<div>1</div>		Current account	211.87 CHF		0.00%	19.77%	322.08	0.00	322.08	-268.91		0.12%	53.17
Total						0.24%	-0.01%	35,327.52	0.00	35,327.52	-35,244.57	13.21%	82.95
TOTAL						619.18%	24.10%	267,529.81	0.00	267,529.81	-37,199.14	100.00%	230,330.67



Allocation

Shows you the allocation of your portfolio across assets, currencies, sectors and countries.

VALUATION CURRENCY
EUR

MARKET VALUE
267,529.81

TOTAL CASH
35,327.52

PERFORMANCE
24.10%

↑

Overview

Holdings

Performance

Activities

Reporting

Costs

Profiles

CURRENCY

VALUATION DATE
11/06/2024

PUBLIC

▼ America

ASSET CLASS

CURRENCY

Amount

Price

Average Purchase Price

historical performance

YTD Performance

Value (EUR)

Accrued (EUR)

Market value (EUR)

Book cost (EUR)

PTF %

Unrealized (EUR)

Current account

437.31 USD

0.00%

7.94%

2.20%

404.92

0.00

404.92

-375.14

0.15%

29.78

Total

1,024.43%

31.19%

126,821.31

0.00

126,821.31

11,278.73

47.40%

138,100.04

Euro

7 items

INDUSTRIA DE DISEÑO TEXTIL (MA)

-1,275.00

45.47 EUR

24.95 EUR

-45.13%

-13.28%

-57,974.25

0.00

-57,974.25

31,813.20

-21.67%

-26,161.05

C + F BEVEK VEGA EQUITY C KAP

-900.00

207.51 EUR

190.68 EUR

-8.11%

-2.47%

-62,253.00

0.00

-62,253.00

57,203.74

-23.27%

-5,049.26

AGRESSOR FCP (VEST)

-53.00

1,949.78 EUR

1,848.46 EUR

-5.20%

-10.08%

-103,338.34

0.00

-103,338.34

97,968.36

-38.63%

-5,369.98

NYRSTAR NV (BR)

75.00

0.06 EUR

0.00 EUR

0.00%

-41.54%

4.56

0.00

4.56

0.00

0.00%

4.56

ORPEA RIGHT EX190124 (PA)

750.00

0.00 EUR

0.00 EUR

0.00%

0.00%

0.08

0.00

0.08

0.00

0.00%

0.08

Current account

34,600.52 EUR

0.00%

0.00%

0.00%

34,600.52

0.00

34,600.52

-34,600.52

12.93%

0.00

MC GL INV/FD SIC GLOB GR EQ -R(CAC)

1,945.00

169.33 EUR

103.13 EUR

64.19%

14.40%

329,346.85

0.00

329,346.85

-200,593.74

123.11%

128,753.11

Total

191.20%

18.39%

140,386.42

0.00

140,386.42

-48,208.96

52.48%

92,177.46

Swiss Francs

1 item

Current account

311.87 CHF

0.00%

19.77%

-4.05%

322.08

0.00

322.08

-268.91

0.12%

53.17

Total

19.77%

-4.05%

322.08

0.00

322.08

-268.91

0.12%

53.17

TOTAL

619.18%

24.10%

267,529.81

0.00

267,529.81

-37,199.14

100.00%

230,330.67



Return


Shows you the return of your portfolio, including the performance over time, both in figures and visually.





Client reports

You can download a report covering a period of your choice showing positions, transactions, allocation and return.



VALUATION CURRENCY
EUR

MARKET VALUE
267,529.81

TOTAL CASH
35,327.52

PERFORMANCE
24.10%
↑

Overview Holdings Performance Activities **Reporting** Costs

Activities filtered by Reporting of type Online

	Date ▾	Report type
↓ ↑	01/08/2024 21:44:35	Client Report
↓ ↑	22/05/2024 11:12:26	Client Report

1 - 2 OF 2 ITEMS



Cost disclosure

Displays all transaction costs you pay when buying or selling a security. Also taxes and withholding taxes linked to transactions and the custody of financial instruments are included.

Transaction details

Transaction date
01/12/2020 12:19:38

Transaction code
Purchase

Amount
31,000.00

Product
ISHARES PHY METGOLD COMM EUR ETC\LO

Price
29.53 EUR

Hist net amount
-919,305.52 EUR

General properties

Status

✓ Executed

Transaction type

Security Movement

Settlement date

03/12/2020 00:00:00

Trade date

01/12/2020 00:00:00

Reference

0002878953746342000000000...

Comment

PURCHASE

Market details

Account number

Stock exchange

Undefined

Quotation type

Per Share

Liquidation type

Average Cost

PFS

✓

Exchange rate

1.00

Realized P/L coupon

0.00 EUR

Initial margin

Market value without A.I.

Historical invested amount

0.00 EUR

Order details

External order number

GAIN LOSS

Historic

YTD

<

How to launch Neon?

Are you an active Neon user?

From now on, you have to identify yourself in Neon using multi-factor authentication. This ensures that both your access and your connection are secured in the best possible way.

1. If you have a Belgian registration number you can log in to Neon using itsme®.

If you already use itsme®, you can get started in Neon right away.

1. Click [here](#) to launch Neon.
This will take you straight to the itsme® login page.
2. Enter your mobile phone number or scan the QR-code and open the itsme®app.
3. Confirm your registration in itsme® and you will have immediate access to Neon.

If you're using itsme® for the first time, you can find a step-by-step guide to activate the app at www.itsme.be. You can easily do this through your bank or with your Belgian ID card.

2. If you do not have a Belgian registration number, you can log in to Neon using the Microsoft Authenticator. In that case, contact your asset manager who will activate your access.

Once your account is set up:

1. Click [here](#) to launch Neon. This will take you straight to the Microsoft login page.
2. Sign in with your username/password.
3. Confirm your login on the Microsoft Authenticator app.

A detailed tutorial on Microsoft 365 multi-factor authentication can be found [here](#).

Need a helping hand to log in?

Please contact your asset manager.



OBJECTWAY

Sign in

xx@owauth.com

[Can't access your account?](#)

Next



Sign-in options

itsme

English ▼

Identify yourself

Phone number

+32 (BE) :

☒ Remember my phone number?

Send

Need a helping hand to log in?

Please contact your asset manager.

Neon is an online tool that allows you to consult your portfolio online and to create all kinds of relevant reports. The tool is made available free of charge by KBC to its clients in the segment of portfolio management by third-party asset managers and customers of family offices. KBC makes every effort to protect access to the tool from third parties. In this regard, it is very important that you take the necessary measures to adequately secure the devices you use to gain access, keep passwords secret and comply with the KBC security regulations and system requirements. Any abuse or suspicion of abuse must be reported immediately to KBC.

In principle, the tool is accessible around the clock, although KBC can limit or even close access for security or maintenance reasons of the application. Provision of the tool does not confer any intellectual property rights on the customer, except for a temporary, limited licence to use it for the purposes for which the tool was created.

KBC may at its sole discretion refuse access, including in the event of service termination, security risks or prolonged non-use of the application.

The tool is provided on an "as is" basis and KBC shall in no way be held responsible for any temporary unavailability of the tool, or the lack of up-to-date information that may be displayed.

